

The Graduand Today

A Publication of Pwani University
A Graduation Journal from the Vice-Chancellor's Office

Thursday 15th July 2021

"Advancing academic excellence in
the face of modern adversities"



ISO 9001:2015
BUREAU VERITAS
Certification



University

Statements

MISSION

To generate, disseminate and apply knowledge while sustaining excellence in teaching, learning and research

VISION

To be a world class University in socio-economic and technological advancements

PHILOSOPHY STATEMENT

Pwani University will strive to be dynamic, responsive and provide quality education, training, research, outreach and opportunities for innovation for the advancement of the individual and society. The University is committed to invest its infrastructure and human resources so as to enhance the discovery, transmission, preservation and enhancement of knowledge and to stimulate the intellectual growth and participation of students in the economic, social, cultural, scientific and technological development of Kenya. The University will offer and disseminate knowledge in all disciplines relevant to the daily life of Kenyans for the purpose of enlightening and enabling students and others to improve their standards of living, provide for intellectual advancement and uplift their spiritual and moral status.

MOTTO

Shajiisho la maendeleo endelevu
(*Empowerment for sustainable development*)



Contents

2 **Brief Background**
Message from the **Chair of Council**

3 The University's **Governance**
Message from the **Vice-Chancellor**

Division Briefs

5 **Administration, Finance and Planning**
Directorate of **Quality Assurance**

7 **Research & Extension**
Academic & Students Affairs

9 **Students Affairs**
The University **Library Services**

11 **Schools of the**
University

21 Board of **Undergraduate Studies**
School of **Graduate Studies**

20 **Technical and Vocational Education and Training**
(TVET)



PWANI UNIVERSITY

Brief Background

Pwani University is situated in Kilifi County, in the scenic resort town of Kilifi about 60 km north of Mombasa and adjacent to the Indian Ocean. The University sits on about 239 hectares of land. The University was established initially as a constituent College of Kenyatta University by a gazette order issued on 23rd August, 2007, with a mandate to, “provide quality education, training, research and innovation for the advancement of the individual and society”. The University is directed in its development agenda by its Master Plan and a 10-year Strategic Plan launched in 2010 and subsequently revised in 2014. The institution has made major strides in putting in place the required infrastructure to mount quality degree programs, and was granted a Charter to become a Chartered University on 31st January 2013. Currently, the University has a student population of about seven thousand.

The University was established at a time of rapid changes in the higher education sector in Kenya and the World, which provided both challenges and opportunities. The rapid growth in Information and Communication Technologies

(ICT's) has opened up new opportunities in teaching and earning, especially Open Distance and e-Learning (ODEL). Pwani University intends to make use of the emerging technologies to enhance access and equity and improve quality in university education.

Currently, Pwani University has a total of eight (8) Schools namely: School of Agricultural Sciences and Agribusiness (SASA), School of Business and Economics (SBE), School of Education (SED), School of Environmental and Earth Sciences (SEES), School of Health and Human Sciences (SHHS), School of Humanities and Social Sciences (SHSS), School of Pure and Applied Sciences (SPAS) and School of Graduate Studies (SGS). The University will continue to be guided in the development of its curriculum by the needs of industry and advances in knowledge in the world in general.

The University is set to grow both in infrastructure, student population and staff profiles and it is envisaged that the student's population will reach 12,000 by the year 2024.



Message from the Chair of the University Council

Good Governance – Our Pillar...

I am privileged to welcome you to Pwani University's 8th graduation ceremony. On my behalf and that of the University Council, I congratulate the 1842 graduands as they receive their various awards of certificates, diplomas and degrees. I wish to commend the Pwani University management for an excellent job done in holding the university together, remaining relevant, re-inventing and steering forward during this difficult period. Through your efforts adopting blended learning, you ensured that teaching, learning and other academic activities in the University continued via the online platform, culminating in the celebration we are having today. I commend the teaching and non-teaching staff for effectively playing their roles.

Pwani University in its commitment to providing quality education, training, research, outreach and opportunities for innovation for the advancement of the individual and society, offers an array of competitive and market driven programmes. As a public university, we shall remain in contact with the community working hand in hand to address societal challenges. We will continue to work closely with counties in the region to achieve our set targets and more. The University continues to collaborate with sister universities, research institutions, environmental conservation institutions and industry both locally and internationally in training, research, joint conferences and community outreach to ensure mutual benefit for the institutions involved. More recently, the university has signed MOUs with such institutions/ organizations: Karlsruhe University of Applied Sciences (Germany); the Waata Community (Kenya) to document the endangered Waata language; Academy of Arts (Poland) through the Transcultural Perspectives in Art and Art Education (TPAAE) to culminate in a Fine Arts and Design programme in Pwani University; Plan International among others.

At Pwani University, we espouse values and a culture that promotes excellence and outstanding character in students, staff and stakeholders. The university espouses ethics and upholds integrity in all its operations. Pwani University is one of the few pioneer universities that have an Ethics Review Committee accredited by the National Commission for Science, Technology and Innovation (NACOSTI) to conduct ethics review of protocols in Biomedical, Physical, Social and Environmental Sciences. This committee serves the entire coastal region and has mentored other universities to begin their own. I challenge students, and more so, those in student leadership positions to exercise ethical values and urge their student followership to do the same, as they too play a significant role in the making of this great university.

As I conclude, I wish to return to the graduating class: Congratulations once more! At the end of this celebration, one chapter of the book that is your life ends and the next begins: blank pages with nothing written on them yet. You have everything it takes to make that chapter more beautiful than the just ended one, not just for yourself but for the world you live in. Limitless challenges as well as opportunities await you; Make a positive difference! As an Alumni of this great university, give back through your skills, time, resources and energy to make it better than you found and left it. Finally, I wish to acknowledge with gratitude the Government of Kenya for its goodwill and invaluable support to the University as it strives to implement its goals and objectives.

Thank you!

Karibu Pwani...

The University's Governance

The University Council

IN EXERCISE of the powers conferred by section 36 of the Universities Act, 2012, the Minister for Higher Education, Science and Technology appointed the following persons to be members of Pwani University Council. The functions of the University Council are described in the University Charter, the Universities Bill 2012 and Mwongozo – The Code of Governance for State Corporations.



Dr. Samuel Ochola, PhD
CHAIRPERSON OF COUNCIL



Mr. Samuel Nyachae
COUNCIL MEMBER



Mr. Bernard Iria
COUNCIL MEMBER



Ms. Nerreah Olick
COUNCIL MEMBER,
ALT. PS EDUCATION



Ms. Susan Mucheru
COUNCIL MEMBER,
ALT. PS TREASURY

Message from the Vice-Chancellor

It makes me happy to welcome you to the Pwani university's 8th Graduation Ceremony. Today's Graduation Ceremony is a culmination of a teaching and learning experience in a unique environment which is constantly evolving both in its human resource profiles, infrastructure and the spectrum of programs on offer. The academic journey especially during this unique and challenging time of the Corona Virus Pandemic has not been easy. It has involved a lot of dedication, sacrifice and going an extra mile for our graduands to be able to accomplish their dream.

Pwani university has continued to support the achievement of our national developmental goals by offering market driven programs such as marine biology and fisheries oceanography, child care and protection, education, bio- informatics, agriculture, commerce, nursing, environmental science and many others. In line with the theme of this year's graduation "Advancing academic excellence in the face of modern adversities" the University has invested in blended learning as a tool to enhance quality of teaching and learning and at the same time mitigate the spread of COVID-19. It is gratifying to note that our staff profiles especially those with the PhD degree has grown from strength to strength and the infrastructure has continued to grow. Additional facilities have been developed and others refurbished.

On teaching and learning, Pwani University as a Centre of Excellence is set to offer market driven programs in Marine and Oceanography, Coastal Environmental and Resource Utilization. The University has now launched the internationally acclaimed Master's program in bioinformatics. On research and innovation, the University in collaboration with KEMRI Wellcome Trust has put up and equipped the Pwani University Biosciences Research Center a state of the art health sciences research laboratory. Through initiatives of

the same collaboration the University has competitively won a grant from the National Research Foundation for additional infrastructure and equipment support for the Pwani University Biosciences Research Center. Also, the University has partnered with the Ministry of Agriculture to train the Youth on modern Agricultural practices with the aim of enhancing food and water security. In an effort to mitigate reduced capitation, the university is engaged in consultations with investors who have expressed interest to partner with the University within the framework of the Public Private Partnership to invest in the development of the University infrastructure.

To all graduating students, and now as Pwani University Alumni, we are all proud of you, you have earned your place in the graduating list, you have the tools to go out and make a difference and make Pwani University proud. You must create a name for yourself and; by extension for the University by upholding good practices of not only as a deserving intellectual but also a complete human being, sensitive to the diversity of all the people around you.

Thank you and god bless you all.



Prof. Mohamed S. Rajab, PhD, E.B.S
VICE-CHANCELLOR

DIVISION *Briefs*

Administration, Finance and Planning



Prof. Helen Mondoh, PhD
Deputy Vice-Chancellor
(Administration, Finance & Planning)

The Administration, Finance and Planning Division supports the Academic and Student Affairs Division and the Research and Extension Division, to ensure quality teaching, learning, research and community outreach. Physical facilities, human and financial resources are planned for, sourced and allocated/ utilised efficiently. Non-core functions are outsourced, at a cost, to the most competitive bidder through an open and transparent tendering system.

Human Resource

To cater for the growing number of academic programmes and conform to internationally accepted standards for student to staff ratio, Pwani University has increased the teaching and support staff compliment from about 100 in 2007 to 426 currently. Of these, 193 are Academic staff while 233 are Administrative and Support staff. Ideally, there should be more teaching staff than administrative staff, and the University is working towards this goal. The number of female staff is 160 while the male staff totals 266, giving a female staff percentage of 37.56%. The Academic Staff Profile is made up of eleven (11) Professors, twelve (12) Associate Professors, twenty-four (24) Senior Lecturers, seventy-three (73) Lecturers, forty-six (46) Assistant Lecturers, nineteen (19) Tutorial fellows and eight (8) Teaching Assistants. In addition, the University has forty-nine (49) Adjunct Academic Staff. The

University also engages teaching staff on a part-time basis to support the academic programmes. Efforts are underway to employ more staff to support new academic programmes that are set out in the Pwani University 2014-2024 Strategic Plan and the Master Plan, and also to replace staff members who for various reasons have left the University.

University Master Plan and Strategic Plan 2014-2024

The University has in place a Master Plan, which was launched on 20th December 2010, that guides development. It also has a Strategic Plan that is revised and structured in line with the Kenya Vision 2030, the Country's Medium-Term Plan, and the Ministry of Education Strategic Plan, to give direction on the future of the University. Key strategic areas of the plan include Access, Equity, Research Science Technology and innovation, infrastructure development, Academic programmes development, enrolment and financial requirements for the University.



Dr. Opiayo P. Mabubi, PhD
Registrar
(Administration, Finance & Planning)

Directorate of QUALITY ASSURANCE

The Directorate of Quality Assurance is tasked with the duty to institutionalise excellence in research, teaching, community service and innovation. This is an important step towards sustaining a culture of quality at Pwani University. The Directorate works closely with other arms of the University to ensure that University operations conform to documented and implied standards and requirements relevant to teaching, learning, research and community outreach. The Directorate works with the Board of Quality Assurance and ISO Committee to oversee: development, implementation and promotion of quality assurance systems, structures and procedures; facilitation of internal and external quality assessment of university operations and systems; monitoring and evaluation of core university processes; setting up interventions to pre-empt or address non-conformities and facilitate continual improvement.

During the 2020/2021 academic year, the Directorate, with the support of University Management, Divisions, Schools, Departments and Sections managed

to achieve the following: Successful recertification of the University for ISO 9001:2015; Internal quality audit of online/blended learning; Internal quality audit of reduced Curriculum Action Forms (CAFs); Monitoring and evaluation of implementation of COVID-19 mitigation measures and MOH protocols; Quality audit of Senate Examination records; 1 institutional self-assessment; 1 course lecturer evaluation; 2 internal ISO audits and 1 surveillance ISO 9001:2015 audit. The Directorate is closely monitoring implementation of the recommendations arising from the quality audits.

Quality management is a collective responsibility at Pwani University. The Directorate therefore engages various stakeholders in its operations. We urge students, employees, parents, alumni, suppliers, partners and collaborators, community leaders and members as well as other parties to provide suggestions and observations that can assist the University to continually improve on service delivery. Such suggestions can reach the Directorate through email: director.qa@pu.ac.ke



Dr. Francis Wokabi, PhD
Director,
Quality Assurance



Research and Extension



Prof. Muniru Tsanuo, PhD
Deputy Vice-Chancellor
(Research & Extension)



Dr. Mkuzi Saha, PhD
Registrar
(Research & Extension)

The Research and Extension Division appreciates the effort made by all faculty in guiding the students to successful completion of their studies. To realize its objective, Pwani University has partnered with key institutions locally and internationally. As an example, on the local front the university has partnered with KEMRI-Wellcome Trust, KEMFRI and KARLO among other institutions. Internationally, the University has also partnered with the Technical University of Munich, the University of Glasgow among others.

Through our collaboration with KEMRI-Wellcome Trust Research Programme and the International Centre for Insect Physiology & Ecology (ICIPE), the University launched Bioinformatics Training (EaNBIT). The Bioinformatics Training is being implemented under a collaborative network of three Universities (Pwani, Makerere and Muhimbili) and four research institutes in Kenya, Tanzania and Uganda, supported by the Forgy International Center of the National Institutes of Health under the H3Africa Programme.

A sample of Research Projects undertaken:

(1) Developing Sustainable Cashew

Production for Improved Food Security, Better Nutrition and Income in Kenya being undertaken the Department of Biochemistry and Biotechnology being funded by NRF:

The project will also optimize local processing technologies of cashew apple, apple juice and jam and identify suitable optimization processes for local processing technologies to retain vitamin C and improve quality and is expected to result in higher revenue to cashew farmers, increased export earning via linkage to valuable export markets.

(2) KEN 212 Project, funded through NUFFIC, that started in October 2014 and ended in October 2020. The project achieved its seven objectives

- The creation of the office of Gender Champion at Pwani University.
- The Project successfully supported two PhDs and two Masters students.
- Promoted innovative learning through blended learning (BL).
- Conducted labour market needs for the School of Agricultural Sciences and Agribusiness focusing more on agribusiness and practical aspects.
- Conduct adaptive research on sweet potato where trials were carried out to ascertain agronomic suitability and consumer preference.
- Established a model farm of innovations and adoption. The University also continued to offer advisory services to farmers free of charge at this facility.

(3) Integrated Coffee-Dairy-Biogas

Multidisciplinary Project, funded by

NRF: In 2017 The Pwani University Biogas Unit was born in partnership with Biogas International and has since grown into a Multidisciplinary Agro-systems Research Unit with a Functional Vegetable Garden under Shed net fertilized using Bio-slurry, a potent Biodigester waste material that is a goldmine for poor soils. This project has placed Pwani University as a Champion of Sustainable Development through Sustainable Agro-systems.

(4) The ENABLE Program: The overall goal of the Program, co-funded by African Development Bank (AfDB) and the Government of Kenya, is to contribute to job creation, food security and nutrition, income generation and improved livelihoods for youths in both urban and rural areas.

(5) Pwani University issued the first prints of the Kiswahili Journal (Volumes 1 and 2 of 2020): The journal promotes scholarly work in Swahili language and culture.

PUBReC

Pwani University Biosciences Research Centre

A model research laboratory in biosciences

Pwani University (PU), in collaboration and partnership with the Kenya Medical Research Institute (KEMRI) – Wellcome Trust Research Programme (KWTRP), established the Pwani University Biosciences Research Centre (PUBReC) with funding from the Wellcome Trust (UK) organization. The centre was launched in November, 2017. As a university based-research centre, PUBReC aims to consolidate and synergize research activities under one roof with two major missions:

- (i) To carry out high quality bioscience research that informs the development of interventions against the factors causing under-development in Kenya and especially the coast region, and
- (ii) To provide high quality training for the next generation of bioscience research leaders.

Locally and internationally funded research projects that are ongoing at PUBReC include: green enzyme technology (industrial application of microbial enzymes), vaccine development, drugs, diagnostics and control tools for human and zoonotic diseases that are endemic to the coast and eastern Africa region, harnessing the potential of marine microorganisms as a source for commercial products and biomarkers for pollution as well as developing methods of improving productivity and understanding genetic diversity of coastal and regional crops such as cassava,

finger millet, coconut, baobab, solanum and amaranth. The centre currently has a well-established molecular and cell biology laboratory, with capacity for genetic engineering, (e.g gene editing using CRISPR-CAS) and has recently received the MinION portable sequencer with Field Kit through a research project funded by Global Challenges Research Fund (UK) in collaboration with the University of Nottingham. In addition, PUBReC received an infrastructure grant award of KES 45 M from the National Research Fund (NRF), to help complete the establishment of the centre by including an animal house, insectary, greenhouse/growth room, additional High Performance Computing and molecular biology equipment.

The centre also provides a great platform for undergraduate student attachments, postgraduate and postdoctoral research projects, school visits and short term trainings such as Golden Gate Cloning and AFriPlant Sci workshops, that have been held in collaboration with the John Innes Centre (UK).



Prof. Suhaila O. Hashim, PhD
Manager, PUBReC



Academic and Students Affairs



Prof. James H. P. Kahindi, PhD
Deputy Vice-Chancellor
(Academic & Students Affairs)



Mr. Nicholas Malau
Registrar (ASA)

Academic Programmes

Pwani University aims to increase access to higher education in Kenya; to serve as a motivator to the youth to aspire to attain higher education; and as a catalyst for business growth in the region. Research conducted in the institution will help provide solutions to environmental, agricultural, industrial, medical, social, economic, and resource utilization challenges facing the Coast Region and the Nation at large. As we aim to contribute to Kenya's Big Four agenda, our efforts will be geared towards contributing to the Blue Economy as well as continue our focus in the fields of:

- Coastal Agriculture,
- Oceanography and Maritime Studies,
- Earth Sciences,
- Tropical Medicine,
- Hospitality and Tourism Management,
- Coastal Arts,
- Culture and Languages.

Currently, the University has Eight (8) Schools: -

- i. Agricultural and Agribusiness
- ii. Business and Economics;
- iii. Education;
- iv. Environmental and Earth Sciences
- v. Health and Human Sciences;
- vi. Humanities and Social Sciences;
- vii. Pure and Applied Sciences;
- viii. Graduate Studies.

In order to offer more Kenyans a chance to study, the University established the Technical and Vocational Training Division to attract students for Certificate and Diploma programs, and who will hopefully continue to their bachelors, masters and doctoral programs in line with the spirit of Kenya National Qualifications Authority framework. Therefore, during the 2019/2020 Academic Year, the total number of students enrolled was over 9,000. Out of this, some 1802 students are graduating and will be awarded various

certificates and diplomas; and conferred with degrees. Pwani University received from Kenya Universities and Colleges Central Placement Service (KUCCPS) Board for the 2020/2021 Academic Year a total of 1956 students. The total student population for 2020/2021 Academic year is approximately 9154.

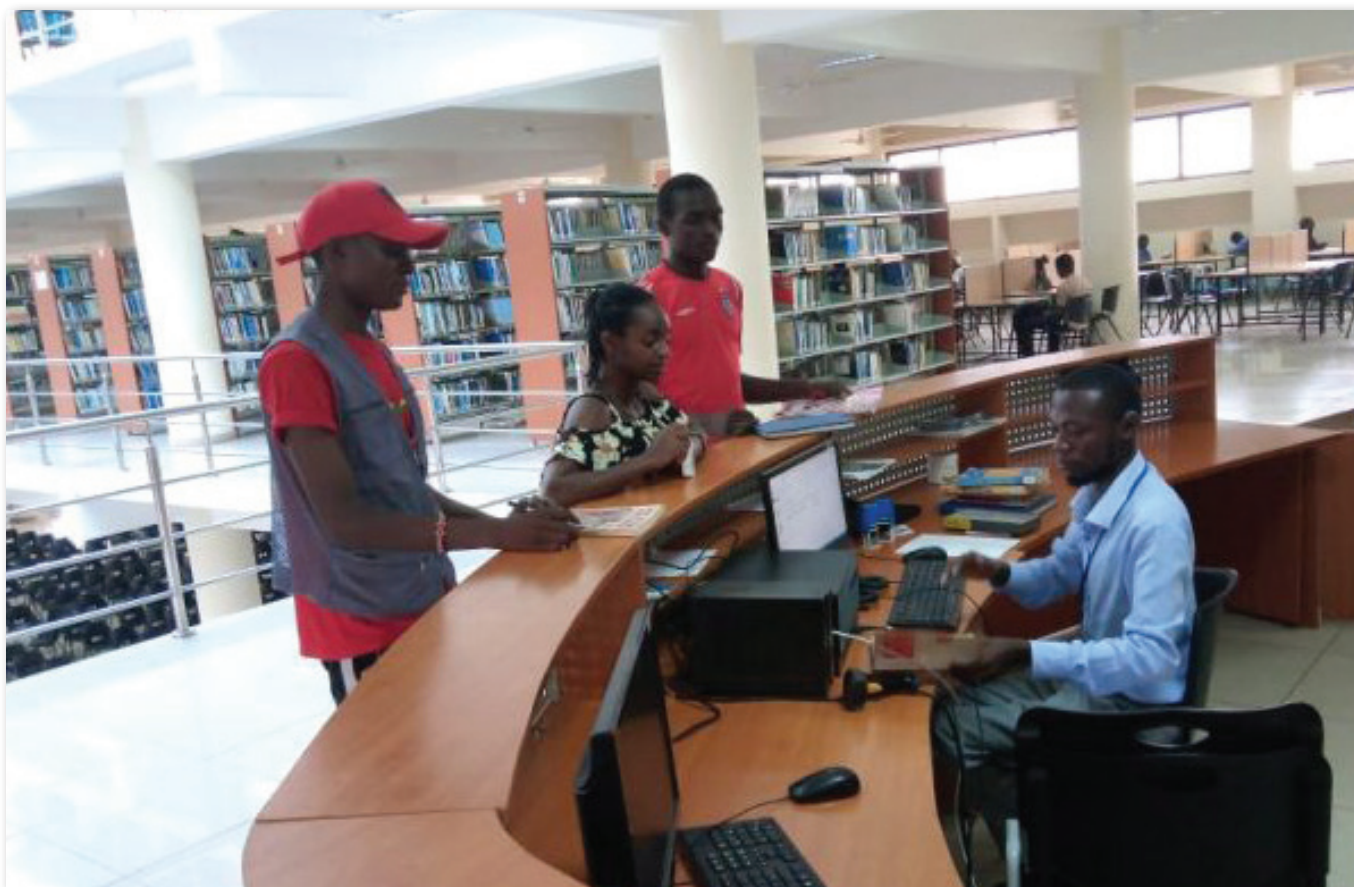
Modes of Study

In order to cater for students with diverse needs the University admits students through the Kenya Universities and Colleges Central Placement Services (KUCCPS) and also through the Self-Sponsored Programme (SSP) to undertake regular and Part-Time/Evening studies which serve many students who are working and are not able to fit into the regular programmes.

Cooperation with Regulatory Agencies

The University is proud to offer programs that are recognized by the various Regulatory Agencies in Kenya. These include the Nursing Council of Kenya and the Kenya Veterinary Board (KVB), the Kenya Nutritionists and Dietetics Institute (KNDI), Public Health Officers and Technicians Council (PHOTC) to mention a few as well as the Commission for University Education (CUE). This is testimony that the quality of Education accorded to our graduates at PU meets National and International standards.

Congratulations Class of 2020!!!



Students Affairs

Students Affairs

Today at Pwani University we celebrate the accomplishments of our 2016 cohort of students who remained dedicated and committed to their course of study. This they did despite the challenges posed by the emergence of COVID-19. COVID-19 came at a time this group was about to complete its cycle of study hence disrupting the processes that culminate to the graduation. We congratulate you for the resilience that you showed as we together waded through these challenges and defeated them. That character and attitude should create a difference in the manner in which you approach life after campus and other endeavours. You certainly deserve to be in this graduation because you made sacrifices and choices and sometimes denying yourself some leisure to reach this level. The Dean of Students office joins you as you celebrate this achievement. **Kongole! Class 2021.**

As an office we will continue to guide students on

matters of student's leadership, financial support, accommodation and social welfare, entertainment, counselling and mentorship, among others. Recently we have become more vibrant on Career Advisory Services, imparting entrepreneur skills and innovation to make our graduands ready for the market demands.



Mr. Ronald Juma
Dean of Students

Pwani University Students Association (PUSA):

To reach-out to the larger student population the DOS works very closely with the student leadership. This is an important link and an opportunity to nurture students as leaders. The closure of universities due to COVID-19 came at a time we were preparing for election of PUSA leaders for the 2020/21 academic year. This process was halted and a caretaker government appointed. As we come out of this pandemic the office of Dean of students in collaboration with the current caretaker government and the ICT department have rolled out the first ever virtual electioneering process. We embrace technology to adhere to Covid 19 guidelines stipulated by the Ministry of Health and for the future.

Career and Mentorship Services

The University in liaison with other external organizations such as, Akili Dada Ajira Kenya Go-Make-It Foundation (GMIF) etc to help sharpen our students on skills for the academics and future. The Ajira Kenya and Kikao Youth Engagement powered by vision 2030, has made initiatives to guide students in the course of the study on issues of career opportunities and linkages. The office of the dean collaborates with industry experts and professionals with students in various fields of academia. The Kikao youth engagement held a successful event that focused on sensitization and opportunities in Innovation.

Students Counselling Services:

To advance the quality of services to our students, beginning this year, the Counselling section of the DOS office has embraced tele-counselling as a strategy to counter Covid-19 related effects. Preventative counselling has also been embraced to promote student's



Students taking meals in the Students Catering Unit which is strictly observing the COVID-19 control protocols.

mental wellness as we fight COVID-19. We hope this will enable our students complete their studies in a tranquil atmosphere. Student counselling services has also adopted the use of e-seminars focused on contemporary issues such as Covid-19. Peer counsellors have been sensitized and taken through training to enhance their skills in identifying students in distress, counselling and referral.

Accommodation

As an office we have continued to cater for the accommodation of our students. Following emergency of COVID-19 we have collaborated with the County government and the Ministry of Health to make our accommodation facilities certified compliant in accordance with the public health protocols. Even with the limited space on campus we have worked closely with private hostels to ensure students get descent accommodation facilities.

Catering Services

The university operates a Students Catering Unit. This unit provides quality and affordable meals to our students. It has staff who are well trained and specialized in making a variety of meals and recipes. Students are encourage to take their meals in our dining halls for safety reasons and to save the cost of food expenditure at these moments of COVID-19 pandemic.

Games and Sports

The University has continued to give students an opportunity to explore their talents in games and sports. Our students participate in regional, national and international tournaments in various specialisations. We have expanded our collection of sports equipment and currently refurbishing existing facilities as well as constructing new sports fields to accommodate new sports disciplines.



Collaboration with HELB

The office of the Dean of students continues to maintain close partnerships with the Higher Education Loans Board (HELB) and other financial aid agencies to ease student financial burden. We have embraced new communication channels and media including social media with HELB to expedite services to our students.

Community Integration and Outreach:

We have maintained a close relationship with the community in Kilifi and its environs. This is in-line with the mandate of the University and knowing that over eighty percent of our students live off-campus. The Office of the Dean has organised several community outreach activities including town clean-up, collection of trash from the beachlines of Indian Ocean, create awareness on the risk of COVID-19 and other community support services.



Team from Ajira Kenya in one of the many visits to the PU pays a courtesy call to the DOS for consultations

The University **LIBRARY SERVICES**

Library as a Cradle for Novel Knowledge

Pwani University library vision is to be a globally renowned library focused on empowering its customers with information and knowledge mastery skills needed in Education, Science, Research, Technology, Innovation and Extension. Its mission is to support quality learning, teaching, research, extension and innovation service objects and functions of Pwani University by providing access to documented information through deliberate activities of collection development, information organization, preservation, interpretation and dissemination to current and anticipated faculty, students, staff of Pwani University and the public.

Library Service Capacity

The library has sufficient students, staff reading, workspace, and sitting capacity of approximately 3,000 students. Currently, the sitting capacity is 716 chairs on second and third floors, with 565 tables, 33 reading carrels in line with the MoH Covid-19 protocols. It has three OPAC computer terminals, a 24/7 Wi-Fi internet presence support by 420mbps. In addition, it has established an online service for users to log in and give feedback on various service entities. It has staff at various cadres with qualifications ranging from Masters to certificate levels.

The Library has established a Knowledge Ambassadors team composed of staff and

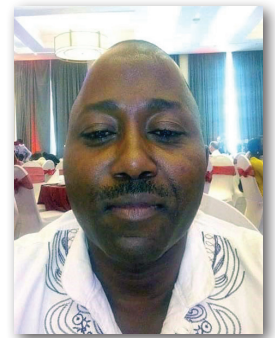
students to market e-resources to the entire university.

Developments in the Electronic, Physical and Infrastructural

The library installed 50 Virtual Library Computers managed by Cybera software on the second floor, together with requisite furniture and networking infrastructure. In the same breadth, it has two computers dedicated to the visually impaired users operating on assistive software like braille.

Library Operations

The library operates within policies, rules and regulations based ISO 9001 2015 Standard QMS, CUE Standards, IFLA guidelines and UNESCO protocols. It carries out guided tours, orientation programmes; door-to-door marketing of resources and services performs needs assessments and gives feedback to (Frequently Required Information (F.R.I)). Provides formal and informal Information Literacy instruction on a daily basis by librarians and Open days through physical and virtual/online platforms i.e. KENET BBB, Zoom, email, Tawk Chabot, WhatsApp, Facebook, Twitter, YouTube and Koha. It maintains hours of access from Monday to Friday from 8.00am to 9.45 pm and on Saturdays from 9.00am to 2.00pm.



Mr. Moses Isutsa
Librarian



Collection Development, Management, and Public Private Partnerships

The library has ordered for physical books worth 1.5million this financial year and has received donations to the tune of over one million from many donors among them Michael Blundell/Ratansi Educational foundation.

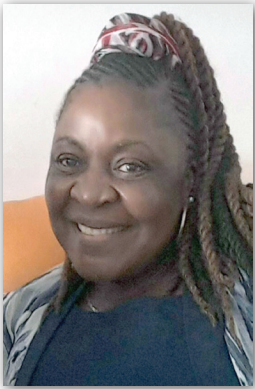
E-resources Development and Growth

The library has revamped its website to become more interactive and responsive to user experience, increased the collection in the Institutional Repository to over 15,000 items and subscribes to over 73 e- journal databases , e-books, open sources , directories digital repositories.

- AGORA
- American Institute of Physics
- American Physical Society
- Annual Reviews
- ARDI
- Audio-Visual Resources
- Banners and Logos | HSTalks
- BHL Home
- Biodiversity Heritage Library
- Biomedicine, Life Sciences, Marketing and Management
- BMC Biology
- Bookboon.com
- Chicago Journals
- De Gruyter Library and Information Science
- Directory of Open Access Journals
- Directory of Open Access Repositories
- Ebrary
- Ebsco host
- Edinburgh University Press
- E-duke journals scholarly collection
- Edward Elgar Journals
- eLibrary USA
- Euclid Prime Collection
- Free Medical Journals
- Geological Society
- Heinonline
- Henry Stewart Talks Ltd
- HINARI
- Honey and Blanckenberg
- HST – The Biomedical and Life Sciences
- HST – The Biomedical and Life Sciences Collection
- HST-Libraries in Digital Age
- IMF eLibrary
- International journal of interactive mobile technologies
- IOP
- IWA Publishing
- Journals 4 Free
- JSTOR
- Kenya Law Reports
- Kenya Open Data Initiative
- Mathematical Sciences Publishers Journal
- MIT OpenCourseWare (OCW)
- OARE
- OECD Library
- OMICS Publishing Group- Wikipedia
- Open Access for Africa
- Open Knowledge Repository
- Open Yale Courses
- Open-Access publisher of peer-reviewed academic journals,
- Open Edition Journals
- Optical Society America
- Oxford Journals
- Project Muse
- Public Library of Science
- PubMed
- Royal Society of Chemistry
- Sage Journals
- Sage Research Methods
- SciFinderⁿ
- SPIE Digital Library
- Taylor & Francis
- TEEAL
- The Biomedical & Life Sciences Collection
- The Cochrane Library
- The Lancet Home
- The Lyell Collection
- The Networked Digital Library of Theses and Dissertations
- University of Chicago Press
- Wiley Online Library
- World Bank eLibrary
- World Legal Information Institute



School of EDUCATION



Dr. Jacinta S. A. Kwenia, PhD
Dean of School

Today, the world does not need just another average teacher. Instead, it needs a teacher who is resourceful, curious, motivating and passionate about helping learners and society at large. An effective teacher makes a difference in people's lives. What a teacher does in the classroom today has a direct impact on the future of the individuals in that class, who in turn impact society. The quality of a teacher is largely determined by the training the teacher undergoes: good teachers are not born: they are made. It takes meticulous planning, perseverance, practice and, guidance to produce an effective teacher.

The School of Education (SED) at Pwani University is committed to producing teachers who are able to address students' social and emotional challenges, close achievement gaps, and ensure that all learners are prepared for the 21st-century challenges. If you desire to become a teacher, this school will help you become an above average one. Here at SED you will get the knowledge and experience to become a reflective, compassionate, and socially conscious teacher - with the power to create real, long-term change in the learners you will serve and communities where you will live and work.

At SED, you will have options to choose from. You may focus on basic (Early childhood and primary), secondary teacher education or on Special Needs Education. No matter what option you select, you will have constant support from the highly experienced and qualified faculty and staff within the school. You will have the opportunity to learn from some of the best professors and practitioners in the field of Education. You will also learn about the latest educational technologies and pedagogies and enjoy the experiences of Virtual and face to face interactions. Moreso, you will be prepared to implement the New Competency Based Curriculum (CBC). The passionate faculty will help you choose

the courses you need, make sure you have time to participate in the programs that matter to you, and prepare you to become the smart, hands-on-teacher. Our goal at the school is to ensure that you are well prepared with a specific, important set of teaching skills as you graduate and begin your teaching career. Our mandate is to offer quality teaching and research in preparing and training personnel for quality performance in all fields of education.

- To help you achieve these goals, the School is organized in four (4) departments:
- Educational Psychology and Special Needs
- Curriculum Instruction and Educational Technology
- Educational Foundation and Policy Studies
- Educational Administration Planning and Economics.

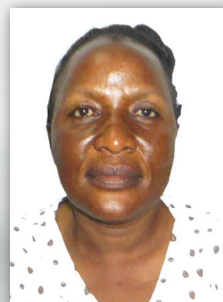
The school also offers post graduate courses that are aimed at producing highly qualified and specialized personnel in the discipline of education. Cognisant of the fact that society today is changing rapidly, the SED ensures modern technologies and methods are part of our modus operandi, for indeed, "If we teach today's students as we taught yesterday's, we rob them of tomorrow." – John Dewey



Dr. Susan W. Murage, PhD
Chair, Department of
Educational Administration, Economics
and Planning



Dr. Sammy K. Rutto, PhD
Chair, Department Educational
Foundations



Dr. Mary Jebii Chemagosi, PhD
Chair, Department of Educational
Psychology, and Special Needs



Dr. Fred Namasaka, PhD
Chair, Department of
Curriculum Instruction and Education
Technology

School of AGRICULTURAL SCIENCES AND AGRIBUSINESS

The importance of agriculture in Kenya and the world is very critical because, for survival, we need agriculture. If you eat, you need agriculture. If you wear clothes, you need agriculture. If you take medicine, you need agriculture. Governments, in their endeavour of poverty reduction and improved livelihoods, need agriculture. At Pwani, we will equip you on transforming agriculture from subsistence and the way of living to a viable business that will create employment and wealth. We should forget the drudgery agriculture of the jembe and panga in favour of emerging technology. The young entrepreneurs are exploiting its great potential such that on the onset of Covid-19, agriculture proved its resilience as the only industry that weathered the storm and continued to absorb more in productive employment.

Therefore, the School aims at achieving the above aspirations by being gender-sensitive, developing cutting edge technology and transferring skills and knowledge based on market needs and demands. The School has a team of energetic, qualified, experienced and highly motivated faculty, who are hosted in two departments to achieve these goals. These departments are

- Department of Animal Sciences
- Department of Crop Sciences

Currently, the School is offering the following programmes: Doctor of Philosophy (PhD) in Animal Sciences, Crop Sciences and Agribusiness; Master of Science (MSc) in Livestock Sciences, Agronomy and Agribusiness; Bachelor of Science (BSc) in Animal Sciences, *Animal Health and Production (*accredited by the Kenya Veterinary Board*), Agriculture and Enterprise Development, Agribusiness Management and Trade, Agricultural Resource Management, Dryland Agriculture, Horticulture and Marketing, General Agriculture and

Agriculture and Extension; Diploma in *Animal Health and Management (*accredited by the Kenya Veterinary Board*), Agriculture and Marketing and Horticulture and Marketing in addition to Certificate in General Agriculture and short courses on demand. The short courses (modules) currently offered are Landscape and Nursery Management, Apiculture, Mushroom and Yoghurt production, and Field School Facilitators course

The School incorporated Farmer Field School (FFS) methodology in all its programmes in its recent curriculum review cycle. Based on this achievement, the School has made Pwani University the first university to incorporate this participatory extension method in its training curriculum. This initiative came through the Food and Agricultural Organization (FAO) of the United Nations. In addition, the School will be indefinitely indebted to the Dutch Government through Nuffic (NICHE-KEN212) for their support in capacity building and investment of state-of-the-art equipment.



Prof. Patterson P. Semenye, PhD
Dean of School

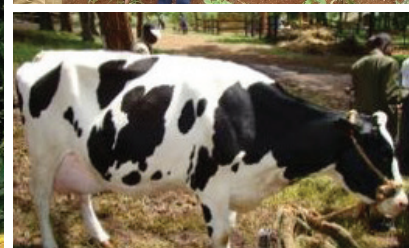
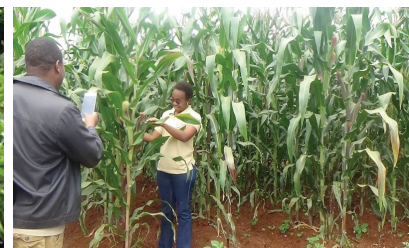
In the real world agriculture is a source of food, livelihood, employment and wealth creation



Dr. Lenard G. Mounde, PhD
Chair, Department of Crop Sciences



Dr. Noah K. Maritim, PhD
Chair, Department of Animal Sciences



School of HUMANITIES & SOCIAL SCIENCES



Prof. Halimu Shauri, PhD
Dean of School

The School of Humanities & Social Sciences (SHSS) provides a link that connects other disciplines with humanity and society in practice. In essence the School performs a critical role for Pwani University and the world by connecting professions with people's needs. Precisely, SHSS disciplines avail opportunities for human engagement and interaction. In this regard the School provides opportunities for academic and societal ethical leadership that is relevant in providing solutions to the 21st Century challenges.

The School offers both undergraduate and postgraduate programmes in diverse fields in the humanities and social sciences. These programmes have been developed and enriched to address global challenges of our time within the framework of the Sustainable Development Goals (SDGs) and in support of the Presidential BIG 4 Agenda. To ensure sound delivery of content in the diverse areas of professional inclination, the School has invested a lot in supporting lecturers in training, conferencing, pedagogy, research, consultancy and community outreach services. The value generated from these activities is infused in enriching classroom experience of our students through sharing lessons and best practices generated from the industry.

Our students are open to a diversity of careers in the public and private sector, with majority being absorbed in the Civil Society, in Non-governmental Organizations (NGOs), Community Based Organizations (CBOs) and Faith Based Organizations (FBOs) locally and internationally. Those in the public sector have been absorbed as Assistant County Commissioners, Assistant Secretaries, Personal Assistants of public dignitaries, Public Relations Officer, Community Development Officers, Human Resources Personnel, Policy and Political Analysts, Heritage Management, Curators, Conservation Officers, Site Wardens, Archival Officers, public Administration Officers, Customer Care Officers, Project Managers, Programme Officers, Community

Liaison Officers, Social Planners and Social Engineers, Monitoring and Evaluation. Some of the career areas where our alumni are engaged in include consultancy, research, and social work, education as teachers, leadership, communication, Religious and Inter-faith initiatives and interdisciplinary work.

In order for the SHSS to offer its services efficiently and effectively to our students, its programmes are offered in three departments namely; the Department of Social Sciences (DSS), the Department of Languages, Literature and Linguistics (LLL) and the Department of Philosophy and Religious Studies (PRS). In these departments, the School emphasizes quality delivery of content and services to our students in line with the university vision and mission of being a world class.

In the DSS we have 13 fulltime and enthusiastic staff with varied but focused teaching and research interests in social sciences disciplines. Their cutting edge research answers to the dynamic nature of social problems by providing responsive solutions that fits within the current context and mode of feeling and thinking. DSS offers programmes in: BA (History), BA (History and Archaeology), BA (Political Science), BA (Psychology), BA (Anthropology), BA (Sociology), BA (Child Care & Protection), MA (Sociology) and PhD (Sociology).

In the Department of Languages, Linguistics and Literature (LLL), the School crystallizes the ease with which students are presented with content within the context of global languages as



Dr. Nicholas Ojwang, PhD
Chair, Department of Social Sciences



Dr. Ali Hemed Awadh, PhD
Chair, Department of Philosophy and Religious Studies



Dr. Nancy Ngowa, PhD
Chair, Department of Languages, Linguistics and Literature



"This was during a past entrepreneurship youth summit workshop held at the PU Resource center. Students were being engaged on various topics in how to start and manage businesses"

professional areas as well as medium of effective communication. More precisely, LLL focuses on the teaching, learning and research in Literature, Linguistics and languages: Kiswahili, English, Arabic, French and German. The Department of LLL is endowed with 19 enthusiastic and dedicated staff specialized in the different professional areas. The programmes offered include: BA (German Studies), BA (English and Linguistics), BA (Kiswahili), BA (French), BA (Literature), MA (Kiswahili), MA (Literature), MA (English and Linguistics), PhD (Kiswahili), PhD (Literature), and PhD (Linguistics).

Finally, in the Department of Philosophy and Religious Studies (PRS), the School and the university benefits from the rich foundations of knowledge drawn from Philosophy and Religion. It is in this department that philosophy of knowledge, ethics and integrity, which are valuable to all professional disciplines, are offered. The importance of ethics and integrity, especially as facets of knowledge and morality in our professional practices, cannot be gainsaid. The departmental has 14 teaching staff specialized in the various degree programmes on offer. These include: B.A (Philosophy), B.A (Religious Studies), BA (Theology), BA (Islamic Studies), BA (Philosophy and Leadership Studies),

MA (Religious Studies), MA (Philosophy), MA (Philosophy and Leadership), MA (African Religions), PhD (Religious Studies), PhD (Philosophy) and PhD (Philosophy and Leadership).

PARTNERSHIPS AND COLLABORATIONS

The School has established partnerships and linkages with local and international organizations and Universities such as the Chinese Academy of Social Sciences, the Technical University of Munich, The Technical University of Dortmund, University of Karlsruhe and the Swedish Research Council (SRC). The collaborations and linkages are to enhance students' attachments, internships, research, student and staff exchange, joint activities such as seminars, workshops, summer schools as well as curriculum development and conferences.

School of PURE AND APPLIED SCIENCES

The School of Pure and Applied Sciences (SPAS) is among the first schools to be created after the launch of the University in 2007. To date the School houses five (5) Departments: the Department of Biochemistry and Biotechnology, Biological Sciences, Chemistry, Mathematics and Computer Sciences, and Physics. The School offers Diploma, Bachelor's, Master's and Doctoral programmes.

The School also offers service to the School of Education, School of Health and Human Sciences, School of Agriculture and Agribusiness among others. In line with the University's Strategic Plan to be a Centre of excellence for research in the areas of Marine Sciences and Oceanography, the School of Pure and Applied Sciences has designed fit for purpose programmes to address these niche areas as part of the effort to enable the community to engage, and invest in the "Blue Economy". In the next academic year, the School plans review its academic programmes in line with expected transition requirement to the Competency Based Curricula (CBC). The School is in the process of launching the following new programmes;

- Bachelor of Business and Information Technology
- Bachelor of Science in Biology
- Bachelor of Science in Conservation Biology
- Bachelor of Science in Energy and Environment Technology
- Bachelor of Science in Oceanography

The School has several postgraduate programmes including two (2), which are externally funded, namely MSc Bioinformatics and MSc Immunology. The

MSc Bioinformatics is supported by the National Institutes of Health (USA) through establishment of the Eastern Africa Network for Bioinformatics Training (EANBiT). EANBiT is implementing a harmonized MSc. Bioinformatics in 3 universities (Makerere, Pwani University and the University of Dar-es-Salaam), with Pwani University being the first to do so. Other collaborating institutions in EANBiT include the International Centre of Insect Physiology and Ecology (icipe), Kenya Medical Research Institute – Wellcome Trust Research Programme (KWTRP), Biosciences eastern and central Africa (BecA) and Uganda Virology Research Institute (UVRI).

Scholarships for MSc Immunology are supported by the Initiative to Develop African Research Leaders (IDeAL) programme through the Kenya Medical Research Institute – Wellcome Trust Research Programme (KWTRP).



Prof. Paul Guyo, PhD
Dean of School



Dr. Samuel S. Libendi, PhD
Chair, Department of Chemistry (DCH)



Dr. Mzee Amana, Ph.D
Chair, Department of Biochemistry and Biotechnology (DBB)



Dr. Thomas K. Baluku, PhD
Chair, Department of Physics (DPP)



Dr. Kiti Alii, PhD
Chair, Department of Mathematics and Computer Science (DMC)



Dr. Bernard Fulanda, PhD
Chair, Department of Biological Sciences (DBS)

School of HEALTH AND HUMAN SCIENCES

The year 2020 came with unexpected challenges in School of Health and Human Sciences, just like it did elsewhere globally – due to the advent of COVID 19 pandemic. During the period of the pandemic which is still on, academic activities in the University and hence the School had to be implemented entirely virtual and when the containment measures were rationalized a blended approach was instituted. This presented the School and University a challenge which necessitated the acceleration of its development of a Learning Information Management System (LIMS) as well as going online with almost all activities in the institution from not only Teaching but Student Registration, processing of Examination up to Presentation of the same to Senate. The School has therefore purposeful taken up the challenge positively and towards this developed further collaborations and networks notably with:

1. AMREF International University where we partner on their Jibu an LIMS rolled out offering Education and Training of health workers across all cadres in their work stations and Field Stations.



Mr. Mwaswere Juma
Chair, Department of Nursing Sciences (DNS)



Dr. Tochi Bitange, PhD
Chair, Department of Foods Nutrition and Dietetics



Dr. Osman O. Abdullahi, PhD
Chair, Department of Public Health (DPH)



Prof. Jameela Hassanali, PhD
Chair, Department of Anatomy and Physiology (DAP)

2. As a partner in the North Coast Medical Training College/School of Complimentary Medicine/ Pwani University NUFFIC Project which among its participants is the Maastricht University in the Netherlands
3. Trnava University in Trnava, Slovenia – development of an extended LIMS for Training and Data Mining within the Jumuiya ya Kaunti za Pwani.
4. We still retain our traditional partners and collaborators among who are AMREF Institute of Capacity Development, HRH/IntraHealth, Strathmore Business School, KEMRI-Wellcome Trust, Technical University of Mombasa, Coast General County Teaching and Referral Hospital (Mombasa), CISP (Comitato Internazionale Per Lo Sviluppo Dei Popoli), Kilifi County Referral Hospital, Malindi Sub County Hospital, Port Reitz Sub County Hospital as well as international institutions including Technical University Munich, Maastricht University, University of Barcelona, and University of Sistan and Baluchistan (USB).



Capt (rtd) Dr. Makorani Y'Dhidha-a-Mjidho, SBSJ
Dean of School

The School of Health and Human Sciences is committed to working closely with both the Public Private Partnership Unit and the Project Implementation Unit in the National Treasury under guidance of World Bank towards the ongoing establishment of the Pwani Teaching and Referral Hospital – a great contribution to the Universal Health Coverage agenda.

This year our school is graduating the first PhD candidate in the Department of Nutrition and Dietetics. with a marked improvement on the number of Masters graduates this year.

The School houses four (4) departments with more than twenty-six (26) staff as follows: Department of Foods, Nutrition and Dietetics (FND), Department of Nursing Sciences (DNS), Department of Public Health (DPH), and Department of Anatomy and Physiology (DAP). The School offers the following accredited academic programmes its various departments:

- Diploma: in Foods, Nutrition and Dietetics (Dip. FND);
- Bachelor of Science: in Nursing (BSN) – Direct entry; Nursing (BSN)- Upgrading; Environmental Health (BEVH) – Direct entry; Environmental Health (BEVH) – Upgrading; Foods, Nutrition and Dietetics (BFND),
- Post Graduate Diploma in Research Methods,
- Masters of Science: in Public Health (MPH), and in Foods Nutrition and Dietetics
- Doctor of Philosophy (in: Human Nutrition, Public Health, Epidemiology, Health Service Management, Disaster Management, and Parasitology,).

In addition, the school has been training short courses in Health Sciences for FUNZO-Kenya, Afya Pwani Programmes, the 'R'-Workshop/Short Course, and the Health Service Management Course in collaboration with other partners.



School of BUSINESS AND ECONOMICS



Prof. Samuel M. Mwakubo, PhD
Dean of School

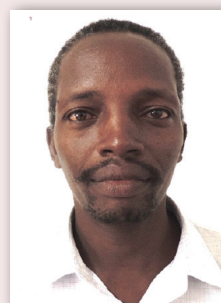
The School of Business and Economics was established on the 4th of January 2017 following the appointment of the founding Dean, Prof. Samuel Mwakubo. The school was hived off from the School of Humanities and Social Sciences. Currently the School of Business and Economics has a student population of about

1000. The School of Business and Economics currently houses two Departments: Department of Business Management & Economics (BME) and Department of Hospitality & Tourism Management (HTM).

The Department of Business Management and Economics currently offers Diploma in Business Management, Diploma in Marketing, Bachelor of Arts (Economics), Bachelor of Commerce Degree with specialization in Business Administration, Management Science, Accounting, Finance, Human Resource Management, and Marketing Management; Master of Business Management with specialization in Finance, Strategic Management, Human Resource, Project Management, Marketing, Management Information System, and Entrepreneurship; and PhD in Business Management. The Diploma in Business Management and Diploma in Marketing are TVET accredited programs. There are plans to offer short courses in Entrepreneurship, County Leadership and Governance and Small-Scale Business and Start-ups. This is in view of the changing world of business and in line with Kenya's Vision 2030 and the Pwani University Strategic Plan 2014-2024. The Department will

offer the following new programmes: Diploma in Islamic Banking and Finance, Diploma in Procurement and Supply Chain Management, Bachelor of Maritime Studies, Bachelor in Purchasing and Supplies Chains Management, Master of Arts in Economics, and PhD in Economics.

The Department of Hospitality & Tourism Management trains human resource for the Hospitality & Tourism Industry. We currently offer Diploma in Tours & Travel, Diploma in Hospitality Management, BSc in Hospitality & Tourism Management, BSc in Tourism Management, MSc in Hospitality & Tourism Management, and PhD in Hospitality Management, and PhD in Tourism Management. Our Graduates are trained to be leaders in Research, Entrepreneurship, customer management, and Innovation in an ever-changing and dynamic industry that combines knowledge, impeccable skills, creativity and passion for utmost performance. Hospitality & Tourism being a major contributor to the gross domestic product in Kenya, provides income to thousands of people and hence the need for skilled manpower in managing the resources for sustainable development. The Department plans to launch academic programs on leisure & Event Management both at the Diploma and Degree levels.



Dr. Ronald Koech, PhD
Chair, Department of Business
Management and Economics
(BME)



Dr. Anthony Pepela, PhD
Chair, Department of
Hospitality and Tourism
Management (HTM)

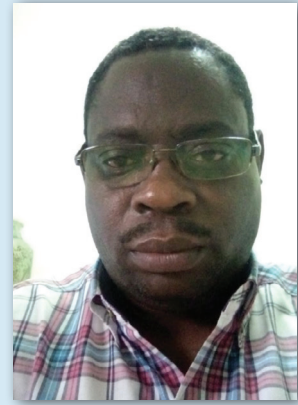
School of ENVIRONMENTAL AND EARTH SCIENCES

The School of Environmental and Earth Sciences (SEES) offers multidisciplinary courses in environmental, community development and earth sciences and provides an understanding of the interactions between the natural functioning of the planet earth and the consequences of human impact on the environment. The primary focus of the School is the link between human societal dynamics, environmental sustainability and the ability of the earth to withstand the interactions. The school currently offers Short courses, Diploma, Bachelors, Masters and Doctoral academic programmes in the areas of Marine Spatial Planning, Blue economy, Environmental Sciences, Environmental Planning and Management, Environmental Studies in Community Development and Geography and GIS. The School provides the students with skills, values, attitude and knowledge on the Earth-Human interaction through scientific principles, concepts and methodologies required to understand the interrelationships of the natural and human environment and to identify, examine and analyze local and global environmental challenges such as land degradation, climate change, pollution, waste generation, and be able to provide solutions to the challenges. The school also provides practical and professional expertise on sustainable utilization and management of environmental resources such as land, forests, water and

harnessing of renewable energies for sustainable development.

Currently, staff and students in the school are engaged in researches in Mariculture, Climate change resilience and adaptation, Environment and climate change, Human-wildlife conflicts, Payment for ecosystems services, and Sediment dynamics and hydrology on sand dunes, Biodiversity based value chain, Livelihood needs and nature conservation in biodiversity hotspots among others.

The School has the following Departments namely; Department of Environmental Science (DES) offering a short course in Marine Spatial Planning, Bachelors' degrees in Environmental Sciences and Environmental Planning and Management and PhD in Environmental Science; and the Department of Environmental Studies (DESCD) offering a short course in Blue economy, Certificate and Diploma courses in Community Development, Bachelor's degree in Environmental studies in Community Development and PhD in Environmental studies in Community Development programmes.



Dr. Maarifa Ali Mwakumanya, PhD
Dean of School



Dr. Joseph Tunje, PhD
Chair, Department of
Environmental Science



Dr. Annie Hilda Ong'ayo, PhD
Chair, Department of
Environmental Studies
(Community Development)

Board of Undergraduate Studies

The Board of Undergraduate Studies, fondly rendered by PU students and staff as 'the BUS', has been proactive in mitigating challenges associated with learning processes at PU, right through admission, registration, program transfers, class-room experience, field attachment, examination, certification and alumni experience. Strategically constituted to ease all types of 'bottle-necks' in all undergraduate degree programmes, the BUS membership comprise of among others, the library, quality assurance, representative of all teaching schools, student leaders, dean of students, registrar student and academic affairs, timetable section, senate and admissions office.

As it celebrates three years of active companionship with PU students in their pilgrimage of university education, the BUS is proudly associated with certain initiatives that are fast turning PU to the university of choice for many learners in Kenya and beyond. The first is curriculum rationalization process which has seen readjustments of PU curricular to match with the market and requirements of regulatory bodies such as Commission for University Education (CUE), the Nursing Board, Teacher Service Commission (TSC), Doctors and Dentist Board, Public Health Board, Animal Health, and many more. The second is embedding of field attachment component to all learning programmes at PU. Through efforts of the BUS, PU has adjusted its budget and curriculum to allow all its graduates to have an extended field learning experience and prepare them adequately to acquire work related skills and etiquette alongside theoretical knowledge in class room. The third is creating a niche area for Pwani University through establishment of new academic programmes that address emerging trends in the local and global market. Pwani is now set to train in marine sciences,

coastal art and culture, arid and dry-land agriculture and more. The BUS has been handy in coordinating inter-school and intra-school programme transfers for

students who land in Pwani with allocations from Kenya University and Colleges Central Placement Service (KUCCPS) that do not match their dreams and talents. In 2019-2020 academic year, BUS considered over 400 applications for transfers. It was, however, the on-line learning process that became most engaging in 2020-21 Academic year as COVID19 interfered with face to face mode of learning. Working together with other departments, the BUS was directly involved in speedy building of capacity for virtual learning. This involved training of both staff and students, revision of policies and procedures as well as creating an enabling environment for all stakeholders. It was not easy! Thanks to COVID19, we have build capacity and PU is now an efficient virtual university. Processes such as teaching, admissions, registration and orientation were successfully undertaken online.

The future is bright! As the 'Kenyan University' undergoes major shifts due to fast changing context on account of COVID19, the new Competency Based Curriculum (CBC), the Blue Economy, and new government funding conditions, the BUS is well 'fueled' and fully endowed with capacity to make learning experience at Pwani University truly world-class, memorable, pleasurable, and life-long edifying.



Prof. Stephen Muoki Joshua, PhD
Director, BUS

SCHOOL OF GRADUATE STUDIES



Prof. Mlewa Mwatete, PhD
Dean of School

Pwani University continues to offer a wide choice of competitive Master and Doctoral programmes in various disciplines. All Graduate programmes are aligned to the Commission of University Education format and duly accredited. The School of Graduate Studies (SGS) is mandated to ensure quality training of much needed Academic staff for the expanding university sector, as well as providing high level manpower to other sectors. As such the SGS plays a key role in coordination and offering administrative support to post-graduate students in Academic Departments of the various schools under the direction of the Board of School of Graduate Studies; whose membership includes representation from each School offering postgraduate programmes as outlined in Pwani University Statute XXII. The operations of the SGS are guided by the Postgraduate supervision policy which is periodically reviewed to meet the diverse and changing needs of the postgraduate faculty and

students.

At the 8th graduation ceremony, the SGS is very proud to present 46 Masters and 12 Doctor of Philosophy graduands for award of respective degrees of Pwani University. That this was accomplished under the very challenging environment occasioned by the Covid19 pandemic is manifest of the dedication to purpose by both the graduands and their supervisors; and does indeed exemplify the theme of this graduation ceremony: "Advancing Academic Excellence in Face of Modern Adversities". Deserving specific mention is the graduation of the first cohort of Master of Science (in Bioinformatics) degree programme. It is noteworthy and historic that this cohort of students admitted in the 2018/2019 academic year are graduating timely i.e. within two Academic Years in line with the requirements of Pwani University Examination Policy as well as those of the Commission of University Education, as stipulated in the University Standards and Guideline (2014). The Board SGS congratulates all the graduands and wish them well in their future pursuits.

Pwani University Mombasa Learning Resource Centre (MLRC) is situated at the Southern House building along Moi Avenue near the famous "Mapembeni" on the way to the main entrance of the Mombasa Port and near all the major banks and university campuses, making it among the commercial and educational street.

There is a regular public transport to and from the MLRC hence making it easier to commute anywhere in Mombasa Island. This makes those working and living along Mombasa and Coast at large have easy access to the MLRC.

The MLRC is currently hosting the Nursing upgrading course which is very popular among the nurses working in Mombasa and Kwale County both in government and public hospitals.

A functioning library and Wi-Fi connection for students is now available. The MLRC is used to provide information to prospective

PWANI UNIVERSITY Mombasa Learning Resource Centre

students on their different courses and career pathways especially for those in Mombasa and its environs. Most staff use this facility for research and consultation with students.



Dr. Najya Muhammed
Co-ordinator



PWANI UNIVERSITY

Technical and Vocational Education and Training (TVET)

Pwani University has been accredited as the Technical and Vocational Education and Training (TVET) Centre during 2020/2021.

TVET programmes are designed to give hands on and practical knowledge and skills relevant for gainful economic engagement, both formal and informal sector. The quality and relevant TVET system is critical for national economic growth and global competitiveness as well as holding a strategic position in effective execution of Kenya's Vision 2030 and the implementation of the "Big Four Pillars" for social economic development. The on-going implementation of the Big Four Agenda in Kenya, has increased the demand for TVET graduates especially in manufacturing, textile/apparel/cotton industry, leather, agro-processing, construction, oil, mining and gas, iron and steel, Information communication and Technology (ICT), fish processing, blue economy, medical engineering and technology. Other TVET graduates in high demand in Kenya include welders, technicians, heavy and light machine operators, engineers, masonry, technologists, artisans, pipefitters and plumbers.

Pwani University (PU) was issued with a Registration Certificate from the Technical and Vocational Education and Training Authority (TVETA) certifying it as a Technical and Vocational College in accordance with the TVETA Act 2021 Section 20 (1). The University

has been registered to operate under the name Pwani University Directorate of TVET. Therefore, with this recognition, PU is now licensed to offer the following TVET Certificate and Diploma courses in the following areas:

Aquaculture Agriculture, Dairy Farm management, Business Management integrated with ICT, Supply Chain Management, Apiculture, Information Communication Technology and Poultry Management Technology. PU is expected to enrol its first set of three hundred and thirty (330) students with a maximum of thirty (30) students per course from September 2021 intake. More TVET programmes are planned during 2021/2022.

We believe that through the proposed TVET programmes, the University will spur economic growth in terms of enterprise and wealth creation in our region. Therefore, we are appealing to stakeholders and Coastal County governments, private companies and Non-Governmental Organizations to support Pwani University TVET programmes through financial support and bursary funds to support enrolment of youth to undertake TVET programmes at Pwani University for enterprise and wealth creation in our region.



Prof. Thomas N. Thoruwa, PhD
Coordinator, PU-TVET



Biogas unit



Dairy milk Pasteurizer

CRYPTIC WORD GRID

Find the names of twenty (20) Professors in Pwani University. They are spelt backwards and forwards, downwards and upwards, horizontally, vertically and transversely. The choice of names are the following: Chai, Chimerah, Guyo, Hashim, Hassanali, Kahindi, Khalil, Mondoh, Muoki, Mutiti, Mwakimako, Mwakubo, Mwatete, Oyoko, Rajab, Rewe, Semenye, Thoruwa, Tole, Tsanuo.

Two (2) of them are done for you.

| | | | | | | | | | | | |
|---|---|---|---|---|---|---|---|---|---|---|---|
| S | X | H | G | T | S | A | N | U | O | Z | C |
| E | F | A | K | N | B | Y | F | B | N | H | G |
| M | E | S | P | A | H | R | U | K | I | H | B |
| A | W | S | J | O | K | K | H | M | O | O | M |
| J | E | A | M | X | A | A | E | D | Y | U | J |
| K | R | N | K | W | L | R | N | U | O | E | A |
| A | Q | A | M | I | A | O | G | K | Y | C | W |
| H | J | L | L | H | M | T | I | N | O | A | U |
| I | T | I | T | U | M | A | E | J | K | L | R |
| N | T | O | L | E | H | M | K | T | O | L | O |
| D | Z | X | B | C | E | F | X | O | E | A | H |
| I | M | I | H | S | A | H | R | A | H | W | T |

POETRY CORNER

THERE'S MEANING IN EVERY MOMENT

There's meaning to be found in every moment,

In everything we think and see and do...

There's purpose to be found in every challenge

And joy in every dream that we pursue.

There's warmth in every kindness that we're given,

And every kindness we ourselves may give...

There's meaning to be found in every moment,

In every hour of EVERY DAY WE LIVE.

– Amanda Bradley



Congratulations Class of 2020

Pwani University prides itself in academic excellence, good corporate governance and offers a conducive intellectual, social and physical environment for research, teaching and learning. The university currently has eight (8) schools, which offer various certificate, diploma, degree, masters, PhD and post graduate courses and programmes in the Humanities, Health, Environment, Agriculture, Sciences, Business and Education disciplines.

Whether you have finished high school, joining the university for the first time or pursuing graduate studies, you will find a wide range of options at Pwani University.

ENTRY REQUIREMENTS

CERTIFICATE COURSES:

A minimum of GRADE C- KCSE or its equivalent except for Certificate in Early Childhood Education (D+). In addition, applications must meet specific Certificate course requirements for each school.

DIPLOMA COURSES:

A minimum of GRADE C- KCSE or its equivalent. In addition, applications must meet specific Diploma course requirements for each school.

DEGREE COURSES:

A minimum of Grade C+ in KCSE or its equivalent. In addition, applications must meet specific degree course requirements for each school.

INTAKE PERIODS

September for Regular and Part-Time

List of Programmes offered

SCHOOL OF EDUCATION

- PhD in all areas offered at Master level
- Master of Education (Agricultural Education)
- Postgraduate Diploma in Education
- Master of Education (Special Needs Education)
- Master of Education (M.Ed.) in: *Curriculum Development; Educational Administration; Educational Planning; Economics of Education; Mathematics and Science Education; Educational Psychology; Philosophy of Education; Policy Studies; Sociology of Education; Comparative & International Education; History of Education*
- Bachelor of Education (Arts)
- Bachelor of Education (Science)
- Bachelor of Education (Special Needs Education)
- Bachelor of Education (Early Childhood Education)
- Diploma in Guidance & Counselling
- Diploma in Primary Education
- Diploma in Early Childhood Education
- Diploma in Agricultural Education and Extension
- Certificate in Early Childhood Education

SCHOOL OF HEALTH AND HUMAN SCIENCES

- Ph.D. in Human Nutrition
- Master of Science in Food, Nutrition & Dietetics
- Master of Science in Public Health
- Bachelor of Science in Nursing (Upgrading)
- Bachelor of Science (Nursing & Public Health)
- Bachelor of Science (Environmental Health)
- Bachelor of Science in Food, Nutrition and Dietetics

SCHOOL OF HUMANITIES AND SOCIAL SCIENCES

- PhD in all the areas offered at Masters level
- Masters of Arts in: *Literature; English & Linguistics; Sociology; Kiswahili; Religious studies; Philosophy*
- Bachelor of Arts (BA) in *Religious Studies; Islamic Studies; Theology; Leadership Studies & Philosophy; Philosophy; Sociology; Psychology; English & Linguistics; Literature; Kiswahili; French; German; Arabic; History; History & Archaeology; Political Science; Anthropology; Child Care & Protection*

SCHOOL OF BUSINESS AND ECONOMICS

- Doctor of Philosophy in *Hospitality Management; Tourism Management; Business Management.*
- Master of Science in Hospitality & Tourism Management.
- Master of Arts in Economics
- Master of Business Administration (MBA) with specialization in: *Strategic Management; Finance; Project Management; Entrepreneurship; Marketing; Human Resource Management*
- Bachelor of Arts in Economics.
- Bachelor of Commerce, with specialization in: *Accounting; Business Administration, Finance, Management Science, Marketing, Human Resource Management.*
- Bachelor of Science in Hospitality & Tourism Management
- Diploma in *Procurement & Supply Chain Management; Hospitality Management; Tours and Travel Operations; Business Management; Supply Chain Management; Islamic Banking*



and Finance; Marketing

- Certificate in Supply Chain Management.

SCHOOL OF PURE AND APPLIED SCIENCES

- Doctor of Philosophy Programmes in:
Microbiology; Entomology; Botany; Fisheries; Immunology; Parasitology; Statistics; Physics; Mathematics; Biochemistry; Biotechnology; Chemistry
- Master of Science in *Microbiology; Fisheries; Applied medical Entomology; Immunology; Physics; Statistics; Biochemistry; Biotechnology; Bioinformatics; Chemistry*
- Bachelor of Science in *Mathematics; Physics; Computer Science; Telecommunication and Information Technology; Biochemistry; Biotechnology; Chemistry; Industrial Chemistry; Biology; Energy & Environmental Technology; Microbiology; Marine Biology and Fisheries; Oceanography; Conservation Biology*
- Diploma in *Applied Biology; Computer Science; Information Technology*

SCHOOL OF AGRICULTURAL SCIENCES AND AGRIBUSSINESS

- Doctor of Philosophy in Crop Science
- Doctor of Philosophy in Animal Science

- Master of Science in *Agronomy; Agribusiness; Livestock Sciences*
- Bachelor of Science in *Animal Production & Health Management; Agriculture & Extension; Agribusiness Management and Trade; Agriculture; Horticultural Science & Management; Animal Science*
- Diploma in *Animal Health and Management; Poultry Management Technology; Dairy Farm Management; Agriculture and Marketing; Horticulture and Marketing*
- Certificate in *General Agriculture; Dairy Farm Management; Apiculture.*

SCHOOL OF ENVIRONMENTAL AND EARTH SCIENCES

- Doctor of Philosophy in Environmental Sciences
- Doctor of Philosophy in Environmental Studies (Community Development)
- Master of Environmental Sciences
- Master of Environmental Studies (Community Development)
- Master of Science in Geography
- Bachelor of Environmental Science
- Bachelor of Science (Geography)
- Bachelor of Environmental Planning and Management
- Bachelor of Environmental Studies (Community Development)
- Diploma in Community Development
- Certificate in Community Development



For further information

The Registrar (Academic and Students Affairs)

Pwani University | P.O. Box 195-80108 | Kilifi, Kenya

Tel: 0786 727 899, 0726 916145 | email: admissions@pu.ac.ke

www.pu.ac.ke



KENYA NATIONAL ANTHEM

English

Oh God of all creation
Bless this our land and nation
Justice be our shield and defender
May we dwell in unity
Peace and liberty
Plenty be found within our borders.

Let one and all arise
With hearts both strong and true
Service be our earnest endeavour
And our homeland of Kenya
Heritage of splendour
Firm may we stand to defend

Let all with one accord
In common bond united
Build this our nation together
And the glory of Kenya
The fruit of our labor
Fill every heart with thanksgiving.

Swahili

Ee Mungu nguvu yetu
Ilete baraka kwetu
Haki iwe ngao na mlinzi
Natukae na undugu
Amani na uhuru
Raha tupate na ustawi.

Amkeni ndugu zetu
Tufanye zote bidii
Nasi tujitoe kwa nguvu
Nchi yetu ya Kenya
Tunayoipenda
Tuwe tayari kuilinda

Natujenge taifa letu
Ee, ndio wajibu wetu
Kenya istahili heshima
Tuungane mikono
Pamoja kazini
Kila siku tuwe na shukrani

THE INTEGRITY ANTHEM

TUANGAMIZE UFISADI

Kenya yangu, naipenda
Nachukia ufisadi
Waharibu nchi yetu
Tuangamize ufisadi

Kenya yangu ngao yangu
Naupinga ufisadi
Hongo mbali, rushwa mbali
Tuangamize ufisadi

Ndugu yangu mwananchi
Tudumishe maadili
Tufanyapo kazi zetu
Tuangamize ufisadi

Tuna nia, na sababu
Na uwezo, nazo mbinu
Tuungane sisi sote
Tuangamize ufisadi

Pwani University
P. O. Box
195-80108 | Kilifi, Kenya
Tel: 0786 727 899, 0726 916145
email: info@pu.ac.ke | **website:** www.pu.ac.ke

Layout and Design by
PWANI UNIVERSITY PRESS

